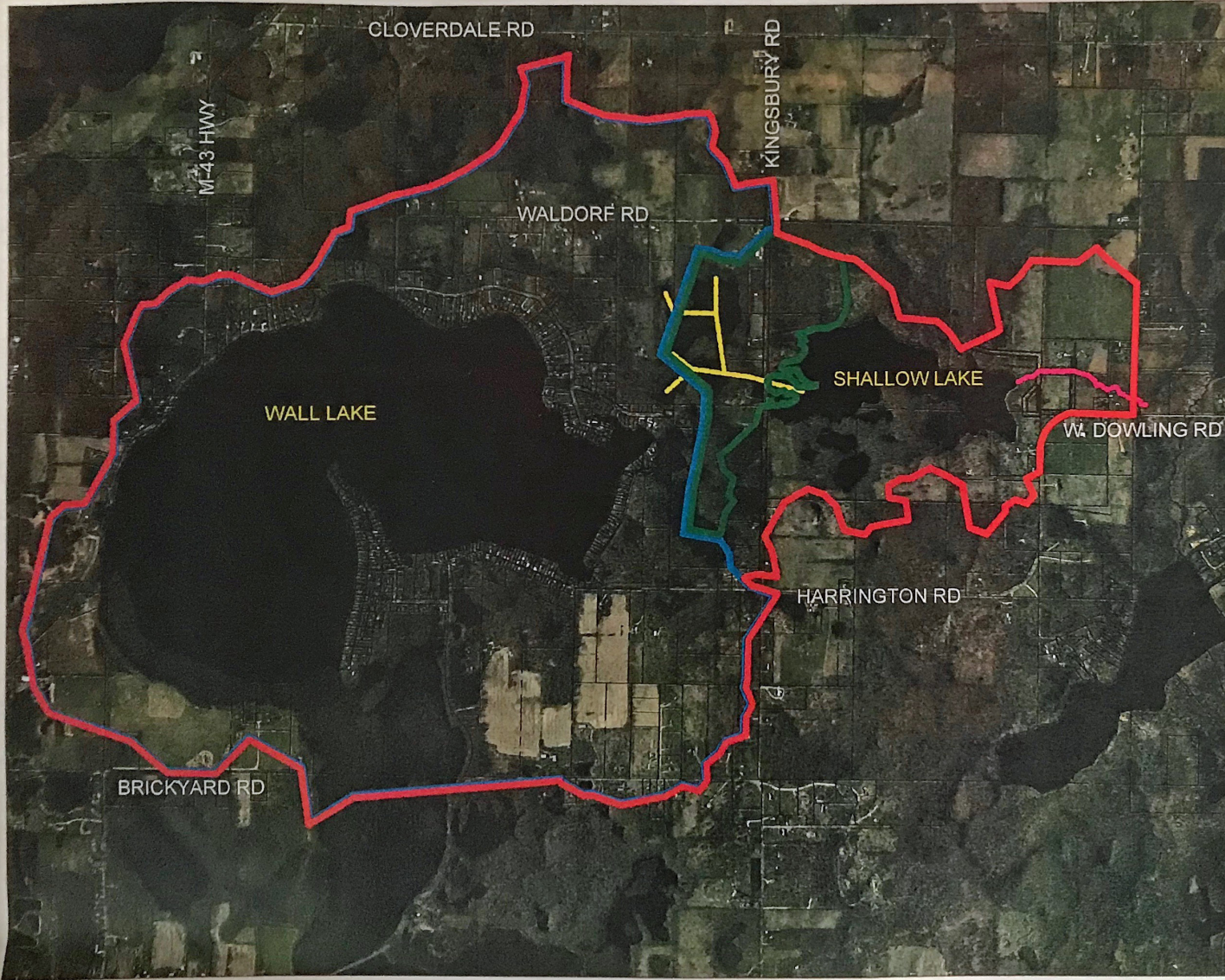


JIM DULL
 BARRY COUNTY DRAIN COMMISSIONER
SHALLOW LAKE DRAIN DRAINAGE DISTRICT
 PART OF SECTIONS 27, 28, 33 & 34 OF HOPE TWP, T 2 N, R 9 W & SECTION 5 OF BARRY TWP, T 1N, R9W
 BARRY COUNTY, MICHIGAN



- LEGEND**
- PROPOSED SHALLOW LAKE DRAIN DRAINAGE DISTRICT BOUNDARY
 - EXISTING SHALLOW LAKE DRAIN DRAINAGE DISTRICT BOUNDARY
 - EXISTING WALL LAKE DAM DRAINAGE DISTRICT BOUNDARY
 - SHALLOW LAKE DRAIN CENTERLINE
 - PRIVATELY OWNED DRAIN & LOCATION OF PROPOSED IMPROVEMENTS
 - ROAD RIGHT OF WAY
 - - - PARCEL LINE

PROPOSED DRAINAGE DISTRICT BOUNDARY MAP

NO.	REVISIONS	BY	DATE

4003 Grand Oak Drive
 Suite A109
 Okemos, MI 48861
 T: 617.807.1100
 F: 617.807.6335
 engd.com

Eng.
 engineering & surveying

JIM DULL
 BARRY COUNTY DRAIN COMMISSIONER
 SHALLOW LAKE DRAIN DRAINAGE DISTRICT
 PART OF SECTIONS 27, 28, 33 & 34 OF HOPE TWP, T 2 N, R 9 W &
 SECTION 5 OF BARRY TWP, T 1N, R9W
 BARRY COUNTY, MICHIGAN

PROJECT NO.
16002

DRAWING
1 OF 1