

Website:

MyWallLake.com

WALL LAKE SIGNAL

Fall 2017

A publication of the
Greater Wall Lake Association

Facebook:

“Greater Wall Lake Association”



2018 Schedule of Events

- **June 2 Annual Garage Sale** **9AM-3PM**
- **June 23 GWLA Annual Meeting** **6-8 PM**
- **July 4th Boat Parade** **10 AM**
- **August 4 Kayak the Wall** **10AM –4 PM**
- **August 25 Light Up the Wall** **Dusk**

FROM THE PRESIDENT’S DESK

For many of us, fall is a favorite time of year bringing with it cool breezes, awe-inspiring foliage, and crisp weather motivating people of all ages to enjoy the great outdoors. Carving pumpkins, baking apple pies, enjoying freshly baked doughnuts, and drinking warm cider help ease our fall chores: taking out our boats, removing our docks, and putting away our deck furniture as we bid farewell to another beautiful summer on our beloved Wall Lake.

We had such a fun-filled summer starting with May. We organized yet another Wall Lake Garage Sale and launched *our very own web-site*, www.mywalllake.com. June brought us together for our annual GWLA dinner meeting at the Delton Moose Lodge. In July we enjoyed our July 4th boat parade and in August we added two new fun family lake activities: “I Kayaked The Wall” and “Light Up The Wall”.

Our GWLA Board volunteers have worked very hard to organize these events and we are grateful for your support. These activities are made possible by our dues paying members. With your continued support we will be able to plan for more family filled events. Our GWLA dues are only \$35 per year. Visit our new web-site to view all the pictures that were taken during these activities and learn what we are up to next!

As we prepare for fall, we know winter will be right around the corner. Christmas shopping replaces visiting garage sales, and holiday decorations appear in place of blooming flowers. It is this time of year that we donate to the places that touch our hearts. With that being said, our beloved Wall Lake is one of those places.

Our mission is to preserve Wall Lake as a pristine legacy for future generations. We are dedicated to protecting, preserving, and enhancing the quality of Wall Lake and its watershed. To that end, we established the GWLA Preservation Fund in September of 2015 at the Barry Community Foundation. All gifts to the Preservation Fund are tax deductible through the BCF 501 (c) (3) designation. Enclosed within this newsletter you will find more information as to how to make your donation.

We sincerely appreciate any and all contributions!

Yours truly,

Christy Tigchelaar, President
“Together we can!”

Willy McDonald's Duck Carving Project

A contest was presented to Wall Lakers to pick the style of duck carving that resident Willy McDonald would carve in order to then use the funds received from it's sale as a donation to the Wall Lake Preservation Fund! Well, you voted and the winning design is the Wood Duck. Willy says "It will be carved in the style that we call a "tweener", meaning the style is in between a Realistic Decorative and a Hunting decoy. Because this will be a special decoy, my carving and painting will lean towards the Realistic Decorative style. The final decoy will be a Wall Lake Woody in spring plumage. It is carved with hand and power tools. The head is carved from Basswood and the body from High Density Cork from Portugal."

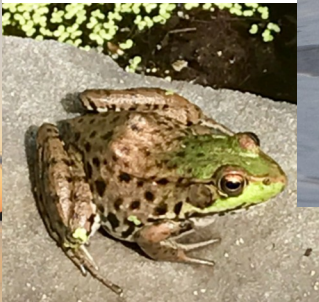


Initial rough cut

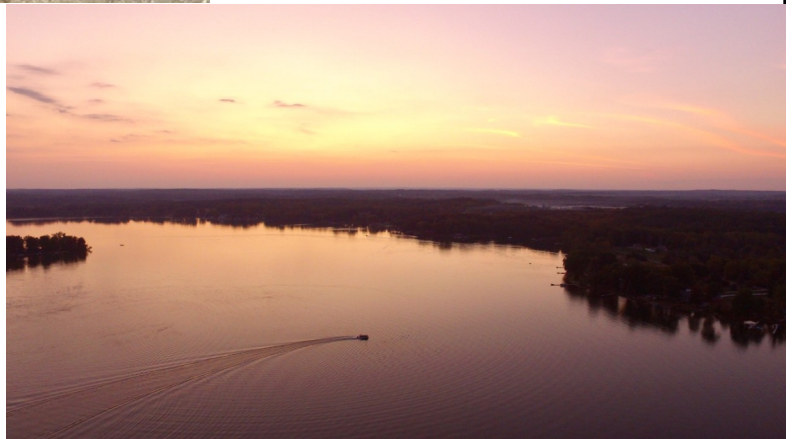


Refining the shape

Stay tuned for updates on this interesting project designed for the benefit of preserving Wall Lake.



Wall Lake Memories 2017



LIGHT UP THE WALL RECAP



Wall Lake residents came out in force as darkness fell of the lake on August 26th this year. For the first time, this new event was a huge success. Those who remained on land did a fantastic job of lighting up their docks, decks and shorelines. And an amazing amount of boaters piloted around, displaying very elaborate decorations to truly light up the lake. We thank all those who participated and witnessed this event on the last weekend before Labor Day. It was a special way to end the summer season, and it will be repeated next year as a regular Wall Lake annual event. Thanks again to all of those who came out for our night of lights.



Join us for the
2nd annual
Light Up the Wall
on August 25, 2018.

@JeffBawrs

Fish Committee Report - Walleye Stocking!



The Greater Wall Lake Association (GWLA) will stock walleye this fall. Approximately 500 6-inch fingerlings will soon call Wall Lake home. We obtain our walleye from a local fish farm that buys them from a Minnesota hatchery. These fish are inspected in Minnesota and Michigan to be sure that they are free from disease.

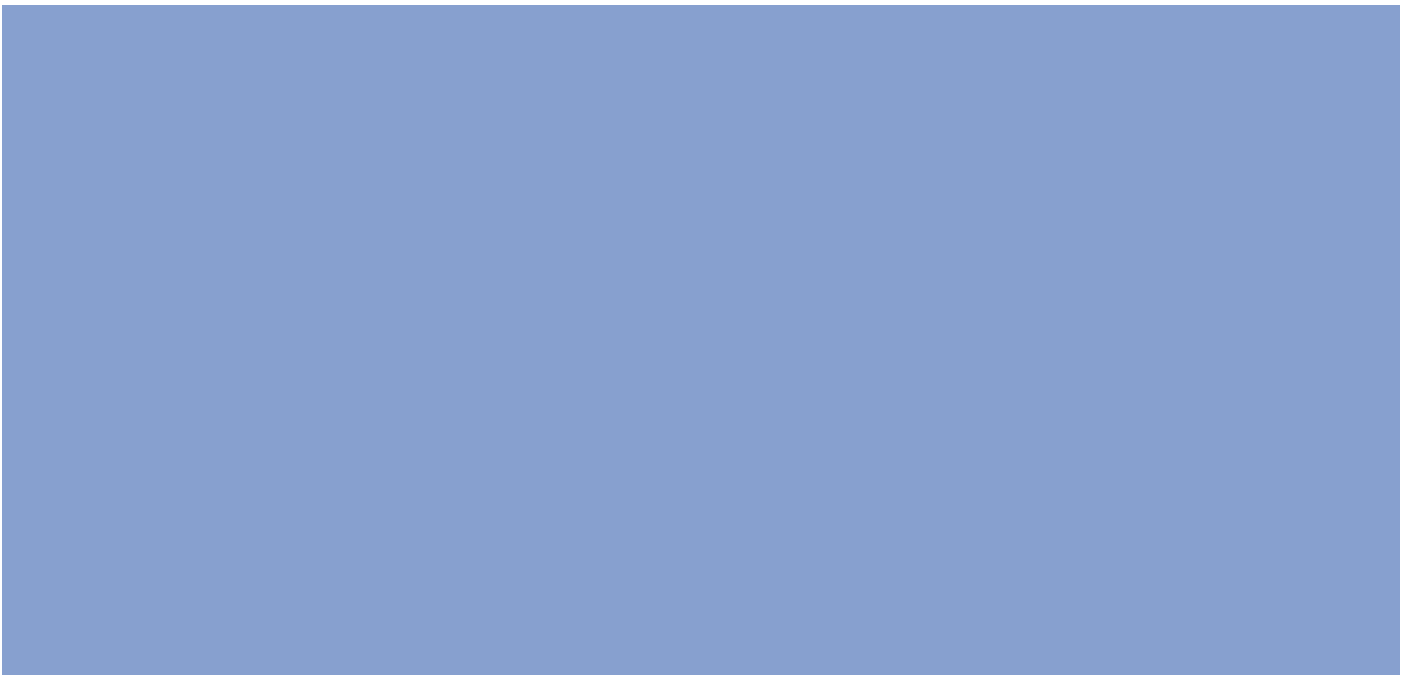
Our goal is to stock just enough walleye to support biodiversity and a productive fishery, while not overpopulating the lake. Thus far the balance seems appropriate. We appreciate your many reports and photos of nice Wall Lake walleye.

Walleye reproduction in Wall Lake is likely zero. So we are dependent on stocking for our population. We are fortunate that walleye survive in Wall Lake as this is not a classic "walleye lake". Lakes that do support walleye reproduction are large, northern wind-swept lakes with rocky shorelines. Very few lakes in southwest Michigan meet this criterion.

In Wall Lake the benefits of stocking warrants the cost of doing so. Past stockings have been successful. The viability of the walleye when stocked has been excellent, with no dead fish emerging from the holding tanks at the time of delivery. Survivability seems to be excellent. We are aware of no negative effects on other fish populations.

We stock walleye no more frequently than every other year. Stocking walleye every year is not recommended as this causes population suppression. A class (stock year) of walleye will consume much of the prey needed for the following year's stocking class, and this leads to suppressed growth and decreased survival if fish are stocked every year.

Many thanks to all who target GWLA donations to the **Wall Lake Fish Fund**. Our walleye stocking program is successful and you are making a big difference in the quality of Wall Lake.





Water Quality Report

On August 31, 2017, Andy Tomaszewski of Professional Lake Management (PLM) performed an Aquatic Vegetation Survey on Wall Lake. The purpose of this survey is to document all plant life (native and invasive) in Wall Lake, and estimate each species density in the lake.

Density is ranked in four levels, least to most dense. The shoreline is broken up into 300-foot sections, and all plant life in each section is recorded. Wall Lake has 74 shoreline sections. Out of the 74 shoreline sections, five contain Eurasian Milfoil, at the least dense level. This means that no more than a few plants were noted in each of these five sections.

So this is very good news. At this time we only have one aquatic invasive plant species, Eurasian Milfoil, and it is being well controlled. Sonar (liquid herbicide for selective control of undesirable aquatic weeds) was last applied in Wall Lake in 2012, and very little Milfoil has returned. Five years is a long time to maintain control of Milfoil after using Sonar.

The most abundant plant in Wall Lake is Robbins Pondweed, and most of that is near the wetlands.

Later this year PLM will send us a water quality report based on several water specimens that were taken throughout the year. We will publish these results in a future newsletter.

We are very fortunate to have only one aquatic invasive plant species, and to have it so well controlled. Many nearby lakes are suffering from ever increasing numbers and quantities of aquatic invasive plants. Crooked Lake, for example, now has six, perhaps seven, aquatic invasive plant species, despite excellent stewardship efforts from their lake association board. The source of their problems, of course, is public access to their lake. The cost of managing such widespread weed growth can be prohibitive, and many lakes in their situation find that they are only able to treat "priority" sections of their lakes, in front of certain homes, for example.

On Wall Lake, 99% of boat traffic is our own lake residents launching their boats in the spring and taking them out in the fall. These boats never see another lake, and have no ability to transmit aquatic invasive plants into Wall Lake. We are very aware that some non-residents abuse our lake access sites. This abuse puts our lake at great risk for environmental disaster, and our lake residents at risk for financial hardship from increased weed control costs and decreased property values.

We want to assure our lake residents that we are doing everything we can to best manage our lake access sites. Given the dire threat from today's more prevalent and more virulent aquatic invasive species, restricting lake access as much as possible from abusive non-residents serves the greater good of the community. Ironically, this restriction will ultimately allow more people in future generations to enjoy a natural resource, by preserving it.

Your generous contributions to our lake association make it possible for us to advocate on behalf of Wall Lake. We have outstanding legal representation, for example, and your donations make it possible for us to afford this.





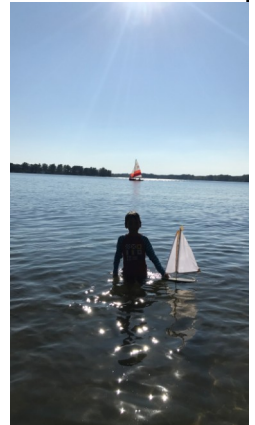
HOW TO PARTICIPATE

Wall Lake has been the source of peaceful pleasure and recreational activities for generations. Those who owned land and camped or built cottages along the lake shore have historically enjoyed the abundance of wildlife, fruits and berries, and the ability to socialize during the summer months with families returning for their vacation time at Wall Lake.

Many current owners have had their properties passed down from grandparents and great grandparents. Newer owners make comments about how special this lake is because of the clarity of the water, the diversity of fish and birds, ducks and vegetation, and the capability of kayaking, sailing and boating without significant and dangerous boat traffic.

Due to all of these reasons, we therefore have a duty to protect Wall Lake for our future relatives, and for property owners to come.

The Greater Wall Lake Association Preservation Fund was set up to aid those of us who feel passionate about protecting this natural gem by offering a method for charitable giving. Please review the brochure enclosed in this newsletter and take advantage of the opportunity to donate what you desire in order to help ensure that Wall Lake remains the special place that we all love.



Send in a check as described in the brochure, or donate online at:

<https://www.barrycf.org/funds/greater-wall-lake-association-gwla-preservation-fund/>



If you have questions about how the Fund works, call Bonnie Gettys, President and CEO of the Barry Community Foundation at 269.945.0526. She has been very helpful to the GWLA and is eager to help us protect our lake and it's environment via this Fund.

Many have honored relatives and friends with their gifts. Small amounts or legacy gifts are accepted. **Thank you** to all who have donated since the **GWLA Preservation Fund** was established. Your donations will help future Wall Lakers enjoy the same beauty and enjoyment that we are blessed to experience today.

How to become a Member of the Greater Wall Lake Association

For only \$35.00 annually, you and your family can be members of the GWLA. Memberships are effective from January through December. You may send checks to the GWLA at PO Box 56, Delton, MI 49046, or go to our website at MyWallLake.com and click on the **Dues/Donations** Tab, **Join Now** and then on **Pay Now**. You do not need a Paypal account to pay by credit card. Please include your email so we can keep you up to date with more urgent information throughout the year.